

Cycloswisstour®



VALAIS ALPS - ZERMATT

Highlights of your tour

The mountain resorts of St-Luc and Chandolin are great stopovers, surrounded by nature, where you can enjoy the rich heritage, the panoramas and the many discoveries along the roads that connect the magnificent and authentic Val d'Anniviers. Cycling to reach Zermatt from the Weisshorn region on the way to the Matterhorn with its legendary face in your sights is an exceptional experience. The connecting routes with the neighbouring valley of Tourtemagne are beautiful alternatives.

Easy riders

4**** properties

REGIO TOUR

5 DAYS / 4 nights - 2 destinations

with transfers between the hotels

from **CHF 850.-** / 1 pax in double

Day 1

Transfer to your destination : St-Luc - Val d'Anniviers

Check in at your hotel : Chalet Favre

Pick up and check the bike, if hired

Free afternoon. Choice of experiences from the catalogue

Dinner on your own.

Day 2

Breakfast at the hotel

Day trips with choice of itineraries based on your level of fitness.

Day 3

Breakfast at the hotel

Transfer to your next destination : Hôtel National - Zermatt

Check in

Free afternoon. Choice of experiences from the catalogue

Dinner on your own.

Day 4

Breakfast at the hotel

Day trips with choice of itineraries.

Free afternoon. Choice of experiences from the catalogue

Dinner on your own.

Day 5

Breakfast at the hotel

In the morning, explore the region or take a bike ride

Return and check of the bike, if hired

Check-out until 11:00 am

Itinerary : you choose the difficulty of your route every day.

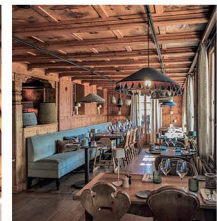
You can change it at any time. We leveled each course in 3 degrees :

Blue, pure pleasure (easy, tourist, between 20 and 50 km, limited elevation)

Red, discovery (medium, amateur, between 40 and 80 km, controlled elevation)

Black, sporting challenge (difficult, between 80 and 120 km, significant elevation).

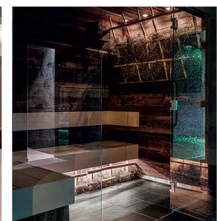
Hôtel **Chalet Favre** - St-Luc - Val d'Anniviers



Matterhorn in autumn - Zermatt



Hôtel **National** - Zermatt



A minimum of 10 participants is required

Not included in the price :

- Meals and drinks - Bike rental - Personal guiding - Transfers from/to the airport

- Any other activity not mentioned in the program

The choice of hotels is not mandatory, and is adjusted based on the number of reservations.

Suitable for riding on open roads with traffic

Contact us now !

SMT SWISS
MOTIVATION
TRAVEL

